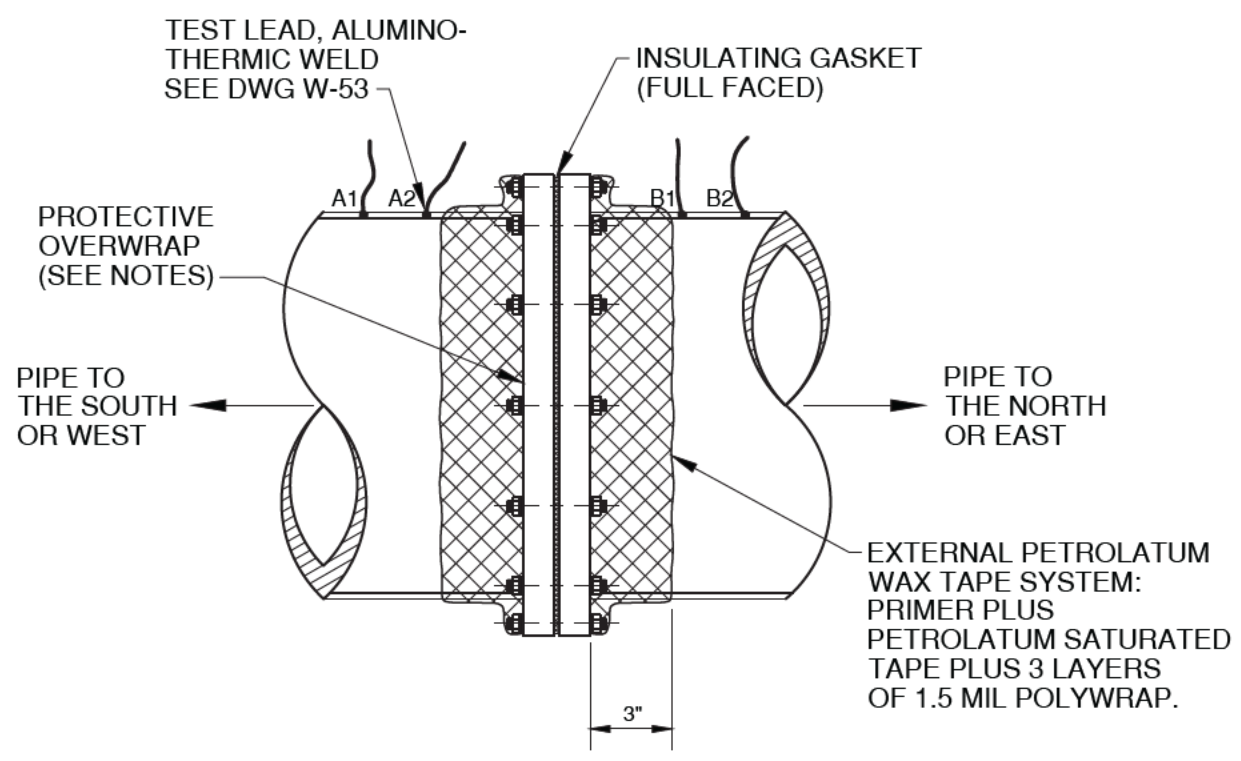
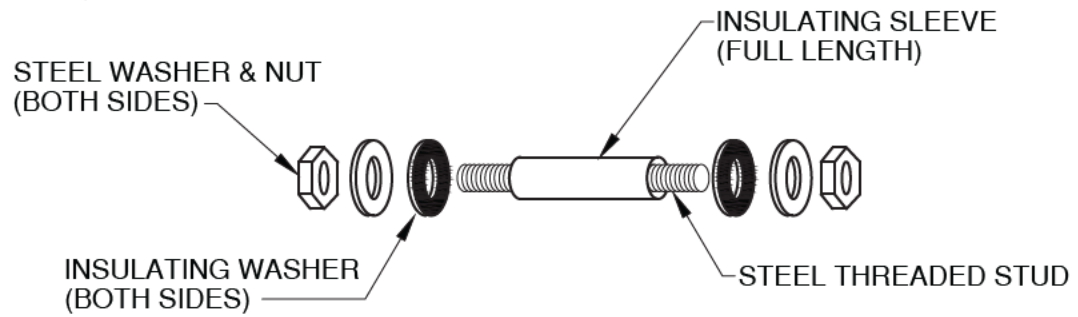



INSULATING MATERIALS:
SEE DRAWING W-46



- NOTES:**
- CARE SHALL BE TAKEN WHEN BACKFILLING TRENCH TO PREVENT DAMAGE TO WAX TAPE SYSTEM.
 - FLANGES 18" AND LARGER SHALL BE OVERWRAPPED WITH 10 MIL TAPE (2 LAYERS 50% OVERLAP) TO PROTECT WAX TAPE DURING BACKFILLING.
 - FLANGES LESS THAN 18" REQUIRE NO PIPE TAPE PROTECTIVE OVERWRAP.
 - NO TEST LEADS OR TEST STATIONS ARE REQUIRED AT BLOW-OFF INSULATORS.

APPROVED:

 District Engineer Date
 5/16/2019
 Latest Revision Date


 VALLEY CENTER MUNICIPAL WATER DISTRICT
 STANDARD DRAWING
BURIED INSULATING FLANGE

NOT TO SCALE
 DWG. NUMBER
W-43