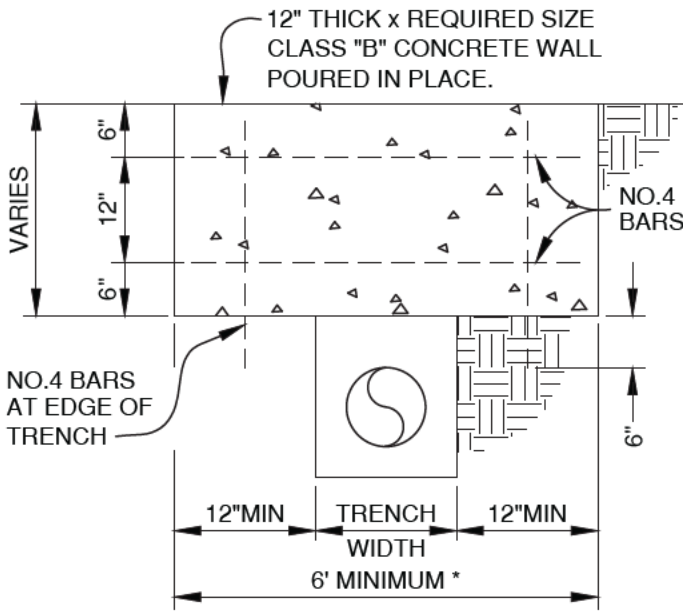


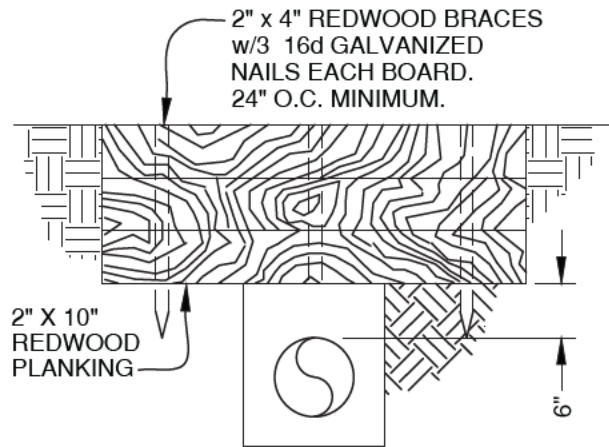
TYPE "A"

NOTE: SLOPES BETWEEN 15% & 30% SHALL BE PROTECTED WITH HAY, SEED AND DIAGONAL DITCHES AT 50' INTERVALS. SLOPES IN EXCESS OF 30% WILL REQUIRE CUT-OFF WALLS IN ADDITION TO HAY AND SEED.

* CUT-OFF WALLS TO BE KEYED 12" MINIMUM INTO UNDISTURBED SOIL. EASEMENT ROADS IN EXCESS OF 13% SHALL RECEIVE 2" A.C. PAVEMENT.



TYPE "B"



TYPE "C"

SECTION A-A

NOTE:

1. WIDTH DIMENSIONS SHOWN ON TYPE "B" CUT-OFF WALL TYPICAL TO ALL INSTALLATIONS.

<p>APPROVED:</p> <p><i>Wally P. [Signature]</i> 5/16/19</p> <p>District Engineer Date</p> <p>5/16/2019</p> <p>Latest Revision Date</p>	<p> VALLEY CENTER MUNICIPAL WATER DISTRICT STANDARD DRAWING</p> <p>SLOPE PROTECTION FOR GRADES OF 30% OR LARGER</p>	<p>NOT TO SCALE</p> <p>DWG. NUMBER</p> <p>W-28</p>
---	---	---