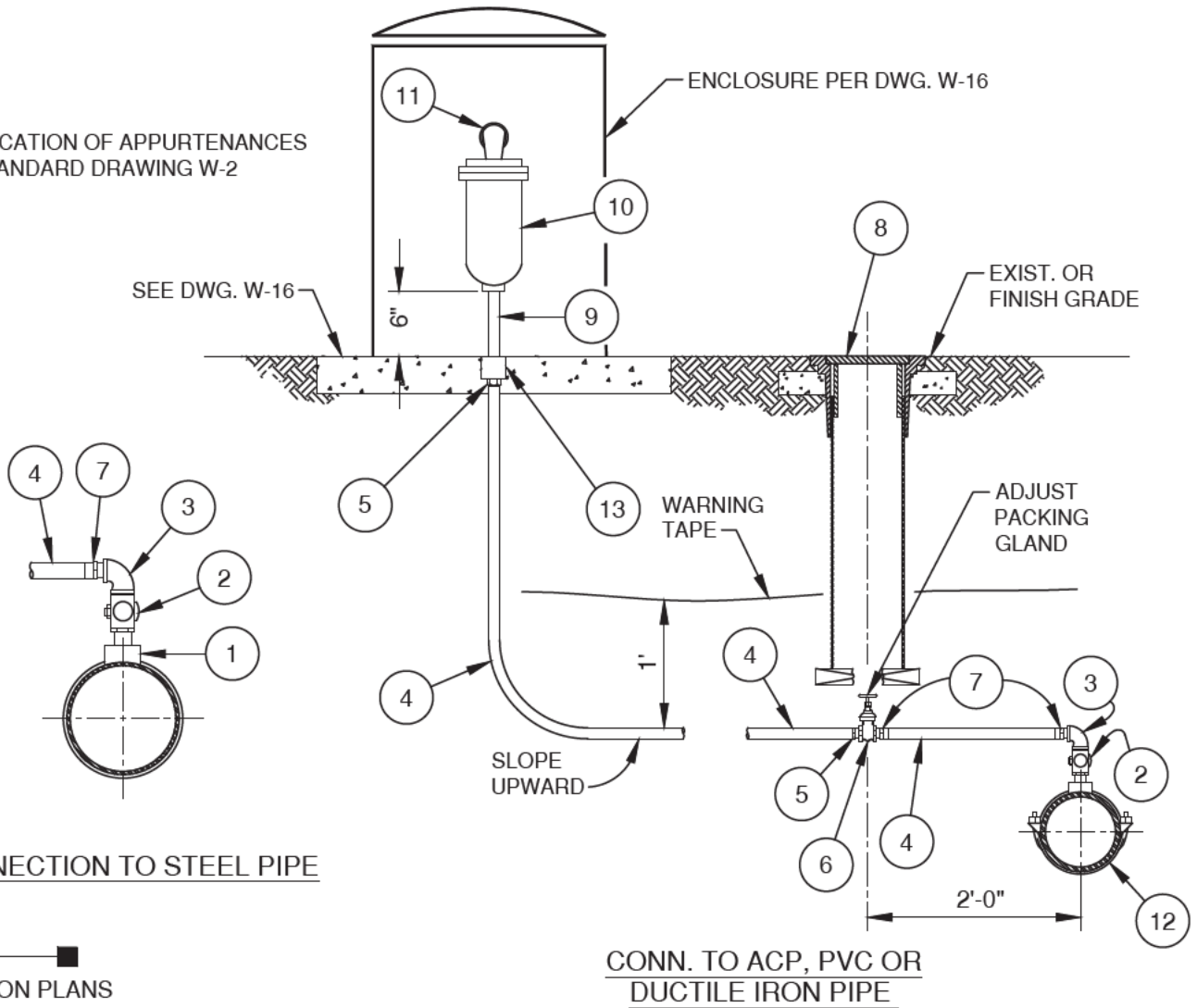


NOTE:

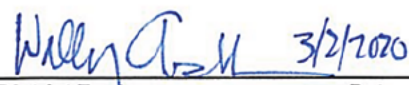
A. FOR LOCATION OF APPURTENANCES SEE STANDARD DRAWING W-2



CONNECTION TO STEEL PIPE

CONN. TO ACP, PVC OR DUCTILE IRON PIPE

| NO. | DESCRIPTION | NO. | DESCRIPTION |
|-----|--|-----|---|
| 1 | 1" HIGH PRESSURE STEEL 1/2 COUPLING | 8 | VALVE WELL FRAME, ASSEMBLY, AND COVER PER W-25 |
| 2 | 1" BRONZE CORPORATION STOP, M.I.P. THREAD x M.I.P. THREAD | 9 | 1" RED BRASS NIPPLE x 6" LONG |
| 3 | 1" BRONZE 90° F.I.P. x F.I.P. | 10 | 1" AIR & VACUUM RELEASE VALVE |
| 4 | 1" COPPER TUBING x REQ. LENGTH | 11 | 1" BRASS STREET ELL, 1" x 3" BRASS NIPPLE, 1" BRASS 90 W/ SS BUG SCREEN FACING DOWNWARD |
| 5 | 1" ADAPTER M.I.P. x COMP | 12 | BRONZE DOUBLE STRAP SADDLE FOR ACP & DIP, SS DOUBLE STRAP FOR PVC |
| 6 | 1" BRONZE GATE VALVE x F.I.P. THREAD WITH BRONZE HANDWHEEL | 13 | 1" BRASS COUPLING, EMBEDDED FLUSH W/PAD |
| 7 | 1" ADAPTER (SWEAT x M.I.P.) | | |

APPROVED:

 District Engineer Date 3/2/2020
 9/14/2020 1
 Latest Revision Date Rev. No.

VALLEY CENTER MUNICIPAL WATER DISTRICT
 STANDARD DRAWING
**1" AIR & VACUUM
 RELEASE ASSEMBLY**

NOT TO SCALE
 DWG. NUMBER
W-13