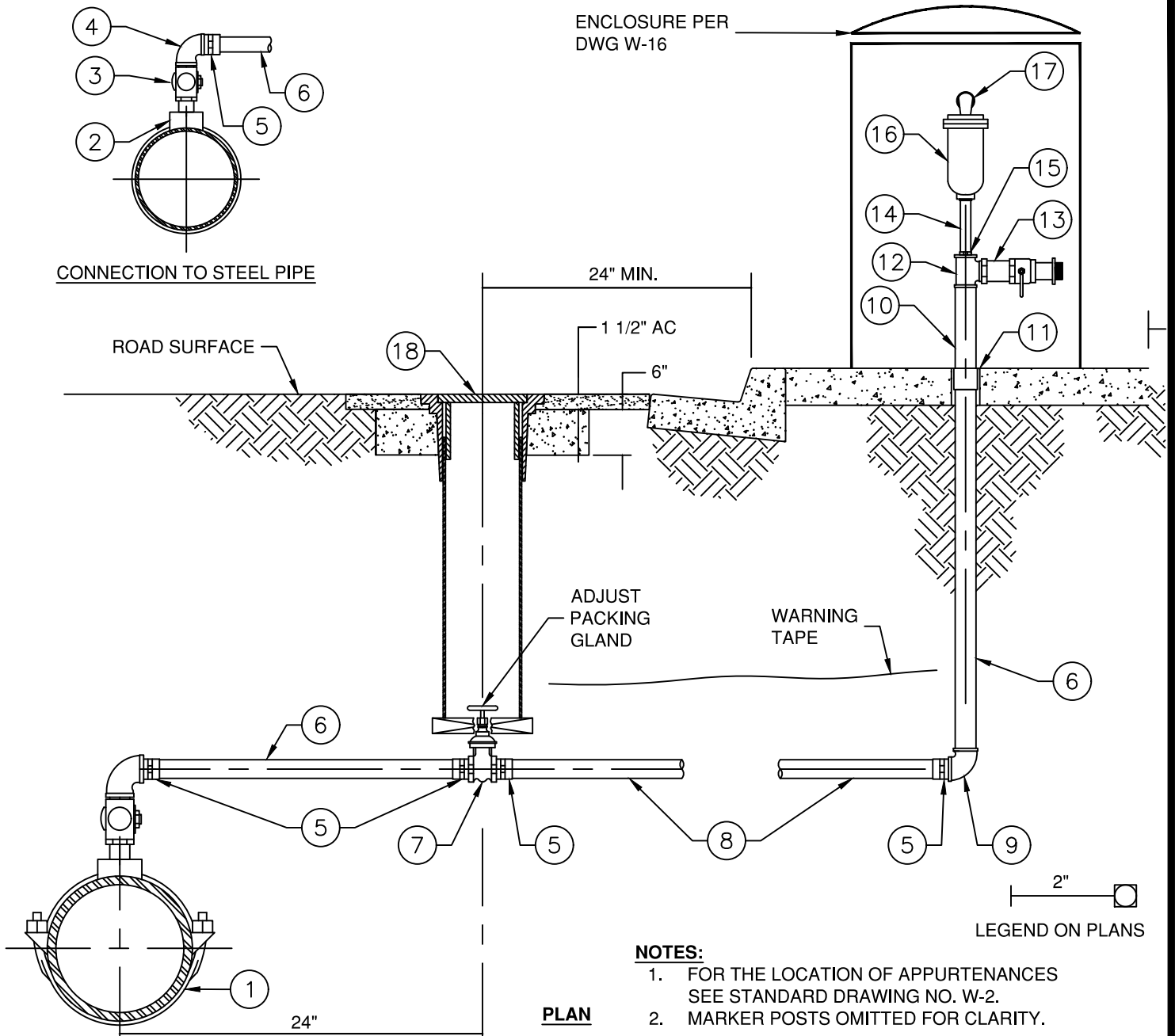


ENCLOSURE PER
DWG W-16



NO.	DESCRIPTION	NO.	DESCRIPTION
1	BRONZE DOUBLE STRAP SADDLE FOR ACP & DIP, SS DOUBLE STRAP FOR PVC	10	2"x12" RED BRASS NIPPLE
2	2" HIGH PRESSURE STEEL 1/2 COUPLING	11	2" BRASS COUPLING, EMBEDDED FLUSH W/ PAD
3	2" BRONZE CORPORATION STOP, M.I.P. THREAD x M.I.P. THREAD	12	2" RED BRASS THREADED TEE
4	2" BRONZE 90° F.I.P. x F.I.P.	13	2" M.I.P. x F.I.P. BALL VALVE W/ 2.5" FIRE HOSE ADAPTER
5	2" COPPER SWEAT ADAPTOR x M.I.P. THREAD	14	1" RED BRASS NIPPLE x 2" LONG
6	2" RED BRASS TUBING x REQ. LENGTH	15	2"x1" BRASS BUSHING
7	2" BRONZE GATE VALVE W/ BRONZE HANDWHEEL, F.I.P. x F.I.P. THREAD	16	1" AIR VACUUM RELEASE VALVE
8	2" COPPER TUBING x REQ. LENGTH	17	1" BRASS STEEL ELL, 1"x3" BRASS NIPPLE, 1" BRASS 90 W/ SS BUG SCREEN FACING DOWNWARD
9	90° BRONZE F.I.P. x F.I.P.	18	VALVE WELL FRAME, ASSEMBLY & COVER PER W-25

APPROVED:

Wally Groll 1/24/22



VALLEY CENTER MUNICIPAL WATER DISTRICT
STANDARD DRAWING

NOT TO SCALE

District Engineer

Date

1/24/22

Latest Revision Date

**1" AIR VACUUM & 2" BLOW OFF
COMBINATION**

DWG. NUMBER

W-10A