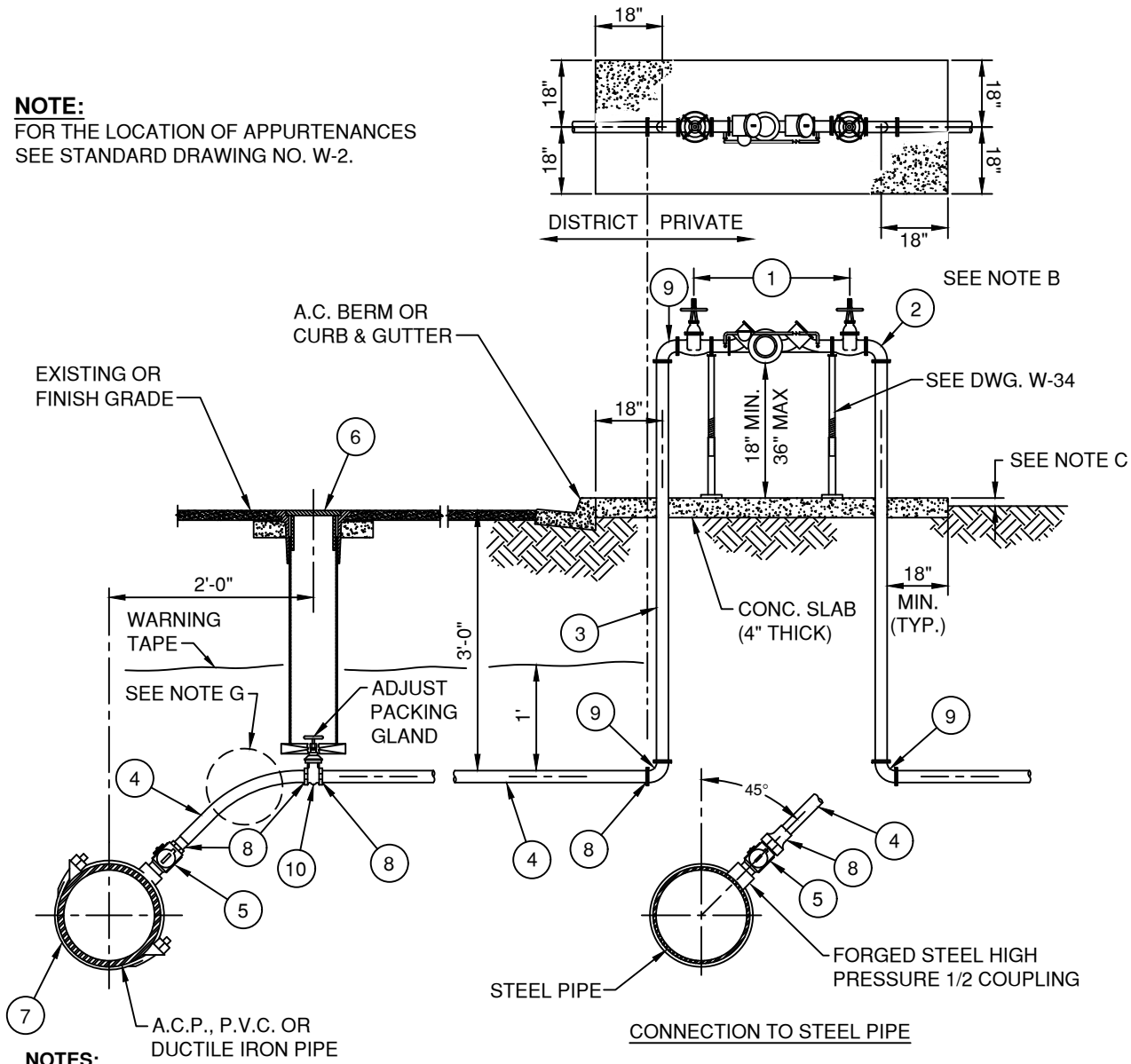
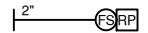


**NOTE:**  
FOR THE LOCATION OF APPURTENANCES  
SEE STANDARD DRAWING NO. W-2.



**NOTES:**

- A. BACKFLOW PREVENTOR ASSEMBLY SHALL BE TESTED UPON INSTALLATION BY A CERTIFIED BACKFLOW ASSEMBLY TESTER. CONTRACTOR SHALL PROVIDE THE ENGINEER WITH WRITTEN TEST RESULTS COMPLETED BY A CERTIFIED BACKFLOW TESTER PRIOR TO BACKFLOW PREVENTOR ASSEMBLY ACCEPTANCE BY THE ENGINEER.
- B. ELBOW MAY BE REPLACED WITH FIRE DEPARTMENT CONNECTION AS REQUIRED BY THE FIRE DEPARTMENT.
- C. CONCRETE PAD TO BE AT GRADE UNLESS INSTALLED IN UNIMPROVED AREAS WHERE IT WILL BE 2" ABOVE GRADE.
- D. VALVE SUPPORTS AS REQUIRED.
- E. MAKE/MODEL OF BACKFLOW MUST BE ON CURRENT STATE APPROVED LIST.
- F. BACKFLOW DEVICE BASED ON DEGREE OF HAZARD (RPDA/DCDA).
- G. A 90° OR 45° COPPER SWEAT ELL x LONG RADIUS MAY BE USED FOR SHALLOW INSTALLATIONS.



LEGEND ON PLANS

NO.	DESCRIPTION	NO.	DESCRIPTION
1	REDUCED PRESSURE PRINCIPLE DETECTION ASSEMBLY (RPDA) / DOUBLE CHECK DETECTOR ASSEMBLY (DCDA)	6	VALVE WELL FRAME, ASSEMBLY, AND COVER PER W-25
2	90° RED BRASS F.I.P. x F.I.P.	7	SERVICE SADDLE; MAIN SIZE x SERVICE SIZE
3	RED BRASS M.I.P. x M.I.P. x REQD LENGTH	8	COPPER SWEAT ADAPTER M.I.P. x SWT
4	TYPE K SOFT COPPER x REQD LENGTH	9	90° BRASS OR COPPER x F.I.P. x F.I.P.
5	BRONZE BALL CORPORATION STOP M.I.P. x F.I.P. (OPERATING NUT TO BE POSITIONED ON THE RIGHT SIDE)	10	BRONZE GATE VALVE W/ BRONZE HANDWHEEL F.I.P. x F.I.P. W/ STAINLESS STEEL NUT

**APPROVED:**  
  
 District Engineer      Date  
 10/20/2021  
 Latest Revision Date

VALLEY CENTER MUNICIPAL WATER DISTRICT  
 STANDARD DRAWING  
**1 1/2" OR 2" FIRE SERVICE**

NOT TO SCALE  
 DWG. NUMBER  
**W-7**