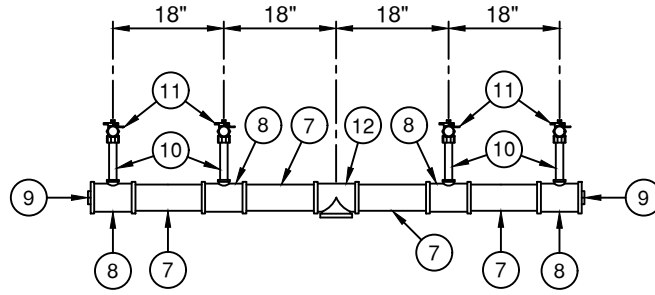
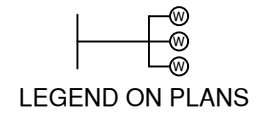
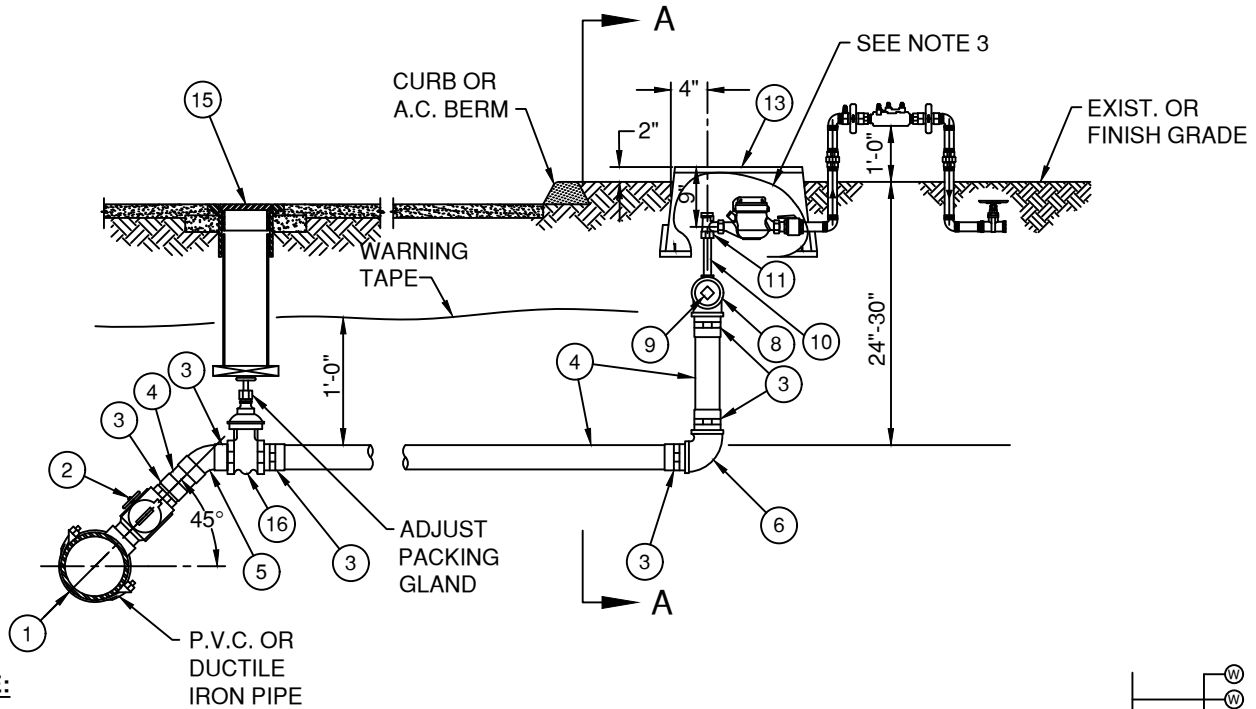


CONNECTION TO STEEL PIPE




SECTION A-A




NOTE:

1. FOR THE LOCATION OF APPURTENANCES SEE STANDARD DRAWING NO. W-2
2. DISTRICT INSTALLED BACKFLOW AREA TO REMAIN CLEAR.
3. REFERENCE W-3A FOR FIRE METER CONFIGURATION.

NO.	DESCRIPTION	NO.	DESCRIPTION
1	BRONZE DOUBLE STRAP SADDLE FOR ACP & DIP, SS DOUBLE STRAP FOR PVC	9	LAT. SIZE BRASS PLUG, M.I.P. THREAD x MANIFOLD SIZE
2	LAT. SIZE MIP X FIP BRONZE CORPORATION STOP. FOR 3" APPLICATIONS USE 3" BRONZE GATE VALVE	10	6" BRASS NIPPLE x SERVICE SIZE
3	LAT. SIZE COPPER SWEAT ADAPTOR x M.I.P. THREAD	11	BRONZE ANGLE METER STOP F.I.P. x METER COUPLING
4	LAT. SIZE COPPER TUBING x REQUIRED LENGTH	12	LAT. SIZE BRASS TEE, F.I.P. x MANIFOLD SIZE
5	LAT. SIZE 45° COPPER SWEAT ELL	13	PLASTIC METER BOX
6	LAT. SIZE 90° BRASS F.I.P. x F.I.P.	14	LAT. SIZE FORGED STEEL HIGH PRESSURE 1/2 COUPLING
7	LAT. SIZE RED BRASS REQ'D LENGTH	15	VALVE WELL FRAME, ASSEMBLY, AND COVER PER W-25
8	LAT. SIZE BRASS TEE x F.I.P. THREAD (MANIFOLD SIZE x SERVICE SIZE), MIN. 1" RISER	16	LAT. SIZE BRONZE GATE VALVE

APPROVED:

 District Engineer Date
 10/20/2021
 Latest Revision Date

 VALLEY CENTER MUNICIPAL WATER DISTRICT
 STANDARD DRAWING
**1 1/2", 2" & 3" WATER SERVICE
 MANIFOLD ASSEMBLY**

NOT TO SCALE
 DWG. NUMBER
W-6