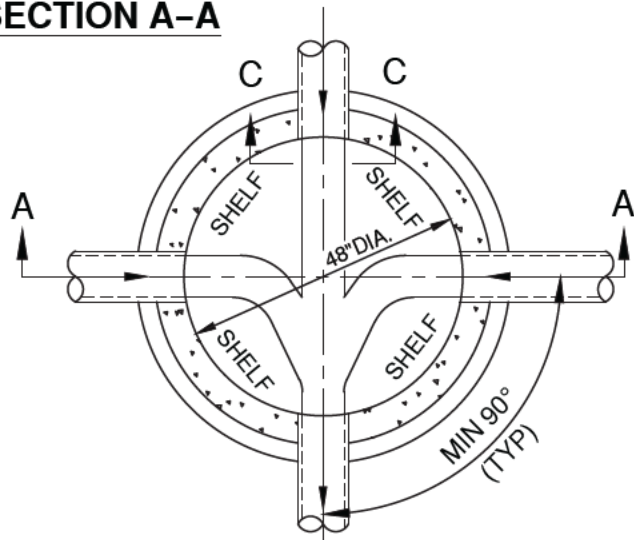


**SECTION C-C**

**SECTION A-A**

**NOTES:**

1. CONCRETE TO BE 560-C-4000.
2. ALL JOINTS SHALL BE FILLED WITH BUTYL RUBBER GASKET.
3. ALL PRECAST COMPONENTS SHALL BE MANUFACTURED IN ACCORDANCE WITH ASTM C-478, LATEST EDITION.
4. JOINTS INTERIOR SHALL BE PATCHED WITH MORTAR AND EXTERIOR JOINTS WRAPPED W/BUTYL WRAP.
5. VERTICAL WALL OF CONE SHALL BE UPSTREAM SIDE OF MANHOLE.
6. NO MANHOLE STEPS ALLOWED.
7. EXTERIOR OF MANHOLE TO BE WATERPROOFED.
8. IF RIM ELEV. TO DOWNSTREAM INVERT ELEV. IS GREATER THAN 12 FEET, USE S-5.



**SECTION B-B**

LEGEND ON PLAN

APPROVED:

*Walter A. ...* 3/2/2020

District Engineer Date

3/2/2020  
Latest Revision Date



VALLEY CENTER MUNICIPAL WATER DISTRICT  
STANDARD DRAWING

**STANDARD PRECAST CONCRETE  
MANHOLE (4' DIA.)**

NOT TO SCALE

DWG. NUMBER

**S-4**