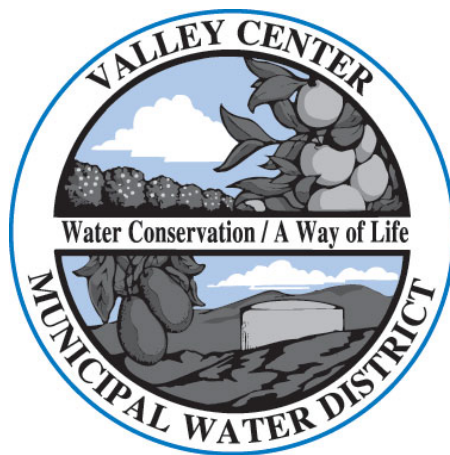


VALLEY CENTER
MUNICIPAL WATER DISTRICT

STANDARD DRAWINGS
Low Pressure



Latest Revision: MARCH 2020

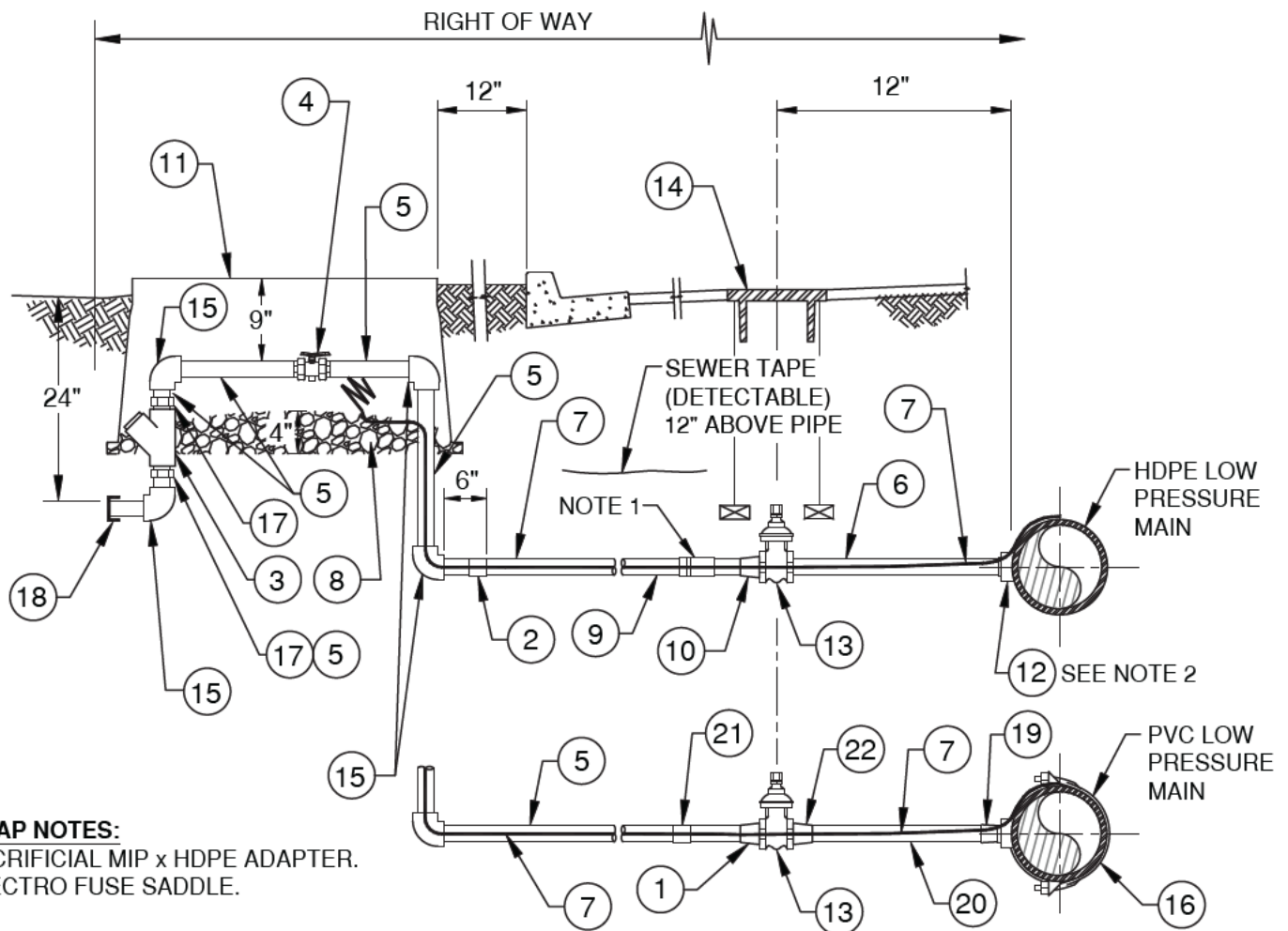
29300 Valley Center Road - P.O. Box 67
Valley Center, CA 92082 (760) 735-4500

Standard Sewer Drawings Table of Contents MARCH 2020

Low Pressure Sewer Drawings

Latest Revision

LPS – 1	Low Pressure Wastewater Lateral	MARCH 2020
LPS – 2	On-Site Grinder Pump Residential	MARCH 2020
LPS – 3	On-Site Grinder Pump Commercial (Sht. 1 and 2)	MARCH 2020
LPS – 4	Low Pressure Cleanout	MARCH 2020
LPS – 5	Low Pressure Terminus Cleanout	MARCH 2020
LPS – 6	Low Pressure Combination Air Valve	MARCH 2020
LPS – 7	In-Line Plug Valve	MARCH 2020
LPS – 8	Blowoff.....	MAY 2019



NO.	SIZE & DESCRIPTION	MATERIAL DESCRIPTION
1	2" FUSED HDPE x 1-1/2" PVC REDUCER	POLY-CAM SERIES 737 (OMIT INTERNAL SS BEND)
2	1-1/2" HDPE/PVC TRANSITION COUPLING	POLY-CAM SERIES 737 (OMIT INTERNAL SS BEND)
3	1-1/2" F.I.P. VERTICAL BALL CHECK VALVE	SCH. 80
4	1-1/2" TRUE UNION BALL VALVE	SCH. 80 PVC
5	1-1/2" PVC PIPE	ASTM D1785, SCH. 80
6	2" HDPE	
7	SOLID TONER WIRE ATTACHED TO PIPE	12 GAUGE COPPER
8	3/4" ROCK	
9	1-1/2" HDPE PIPE	
10	2" x 1-1/2" HDPE REDUCER	
11	CARSON 1730 GREEN BOX, MARKED SEWER	ASTM D2464, SCH. 80
12	2" FUSED OUTLET	
13	2" HDPE BALL VALVE	INTEGRIFUSE NITRILE (NBR), PE100 BALL VALVE
14	VALVE CAN W/SEWER ON LID	SEE VCMWD STD DWG W-25
15	1-1/2" PVC 90° SLIP ELBOW	ASTM D2464, SCH. 80
16	2" SADDLE	TWO PIECE BOLTED WITH O-RING, SCH. 80
17	1 1/2" x 2" SLIP ADAPTER	ASTM D2464/D2467, SCH. 80
18	1-1/2" SLIP CAP	ASTM D2467, SCH. 80
19	2" M.I.P. x SLIP COUPLING	ASTM D2464/D2467, SCH. 80
20	2" PVC	ASTM D1785, SCH. 80
21	2" SLIP COUPLING	ASTM D2464, SCH. 80
22	2" FUSED x PVC ADAPTER	POLY-CAM SERIES 737 (OMIT INTERNAL SS BEND)

APPROVED:

Wally G. Hall 3/2/2020

District Engineer

Date

3/2/2020

Latest Revision Date



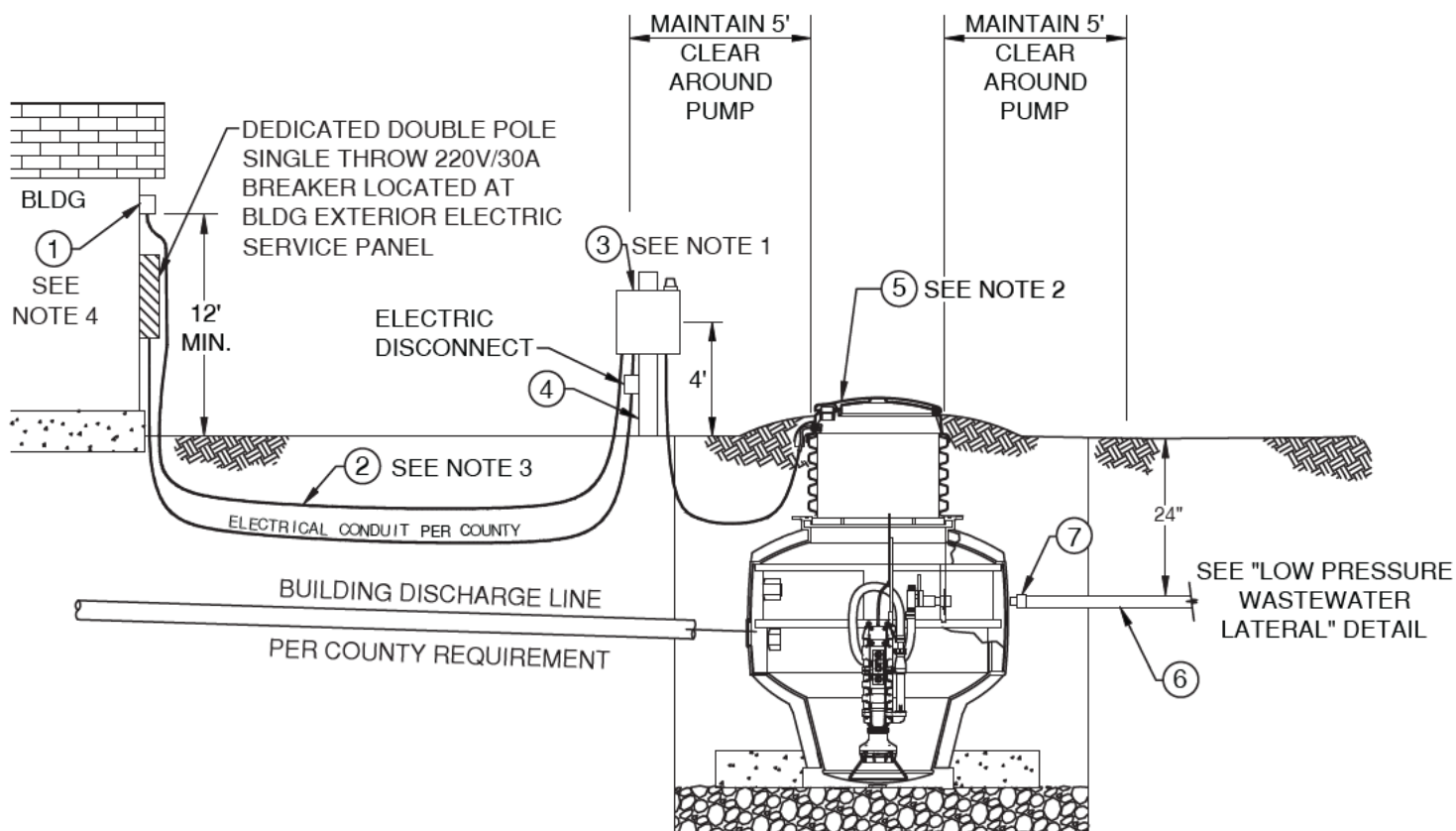
VALLEY CENTER MUNICIPAL WATER DISTRICT
STANDARD DRAWING

LOW PRESSURE WASTEWATER LATERAL

NOT TO SCALE

DWG. NUMBER

LPS-1



NOTES:

1. CONTROL PANEL MUST BE VISIBLE FROM THE GRINDER PUMP.
2. GRINDER PUMP MUST BE AT LEAST 10' FROM THE BUILDING. GRINDER PUMP TO BE MAINTAINED BY DISTRICT.
3. MAINTAIN 4" CLEARANCE FROM ELECTRIC CONDUIT. DISTRICT TO INSTALL ETHERNET WIRE.
4. PLACEMENT TO BE DETERMINED BY VCMWD. RADIO AND POWER OVER ETHERNET TO BE MAINTAINED BY DISTRICT. REMOTE SENSORY UNIT TO BE MOUNTED INSIDE RESIDENCE.
5. A HYDROSTATIC TEST WILL BE CONDUCTED FROM THE TANK TO THE LATERAL.

NO.	SIZE & DESCRIPTION	MATERIAL DESCRIPTION
1	RADIO	VCMWD SUPPLIED
2	1" CONDUIT WITH PULL ROPE	
3	CONTROL PANEL	
4	4" x 4" POST TREATED	OR EQUAL
5	GRINDER PUMP	E-ONE (SIZE DETERMINED BY DISTRICT)
6	1-1/2" PVC PIPE	ASTM D1785, SCH. 80
7	1-1/2" SLIP x 1-1/4" FIP REDUCER	ASTM D2464/D2467, SCH. 80

APPROVED:

Wally G. Hall 3/2/2020

District Engineer

Date

3/2/2020

Latest Revision Date



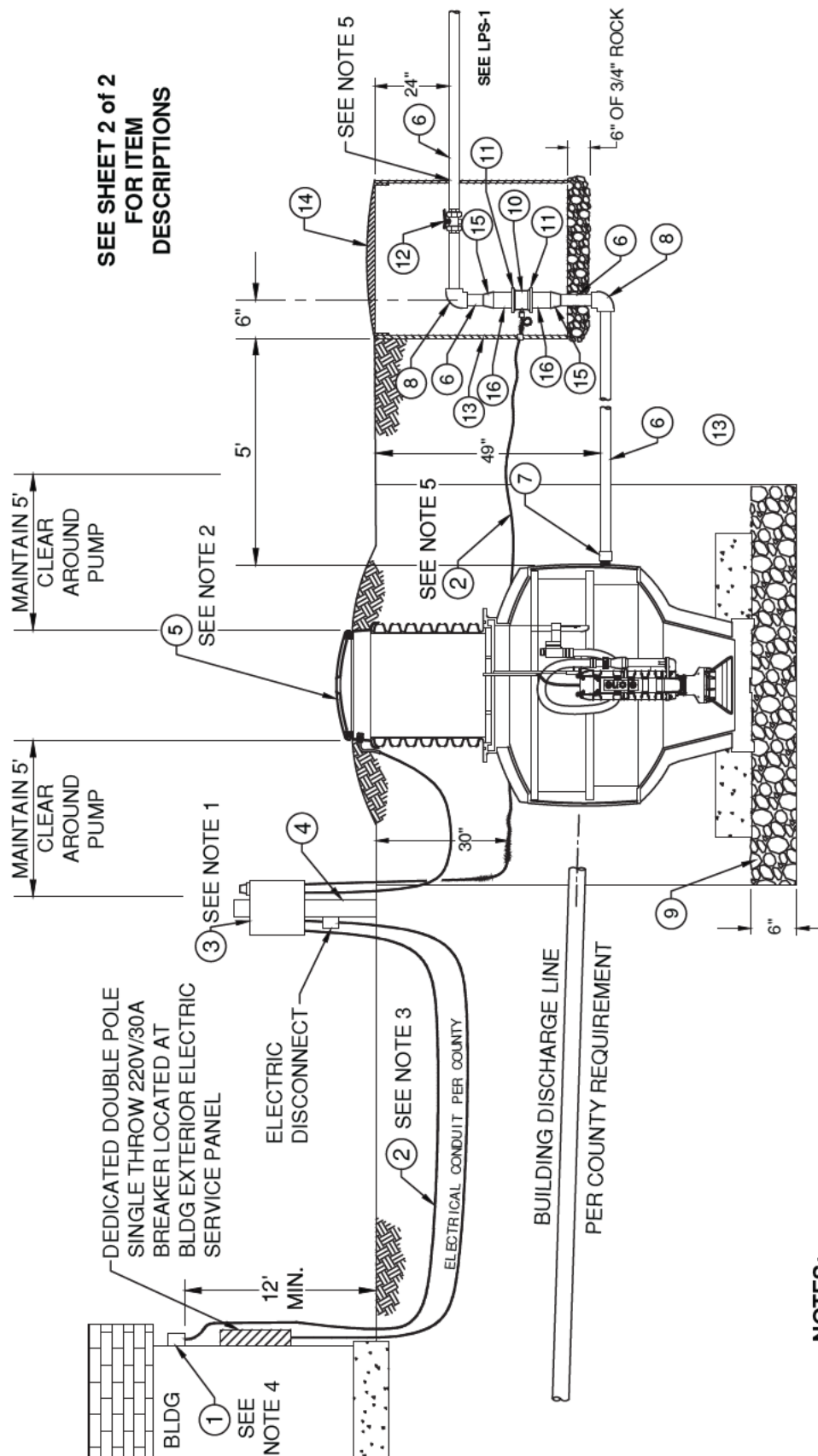
VALLEY CENTER MUNICIPAL WATER DISTRICT
STANDARD DRAWING

ON-SITE GRINDER PUMP RESIDENTIAL

NOT TO SCALE

DWG. NUMBER

LPS-2



NOTES:

1. CONTROL PANEL MUST BE VISIBLE FROM THE GRINDER PUMP.
2. GRINDER PUMP MUST BE AT LEAST 10' FROM THE BUILDING.
3. GRINDER PUMP TO BE MAINTAINED BY DISTRICT.
4. MAINTAIN 4" CLEARANCE FROM ELECTRIC CONDUIT.
5. DISTRICT TO INSTALL ETHERNET WIRE.
6. PLACEMENT TO BE DETERMINED BY VCMWD. RADIO AND POWER OVER ETHERNET TO BE MAINTAINED BY DISTRICT.
7. CONDUIT FOR POWER TO FLOW METER AND 1-1/2" DISCHARGE LINE. CORE THRU STACKABLE RISER, (ITEM 14), WITH CONDUIT AND 1-1/2" DISCHARGE LINE, ADD RTV/SILICONE BETWEEN AND AROUND CORE OPENING AND CONDUIT.

APPROVED:

Wally G. Hall 3/2/2020
District Engineer Date

3/2/2020

Latest Revision Date



VALLEY CENTER MUNICIPAL WATER DISTRICT
STANDARD DRAWING

ON-SITE GRINDER PUMP COMMERCIAL

NOT TO SCALE

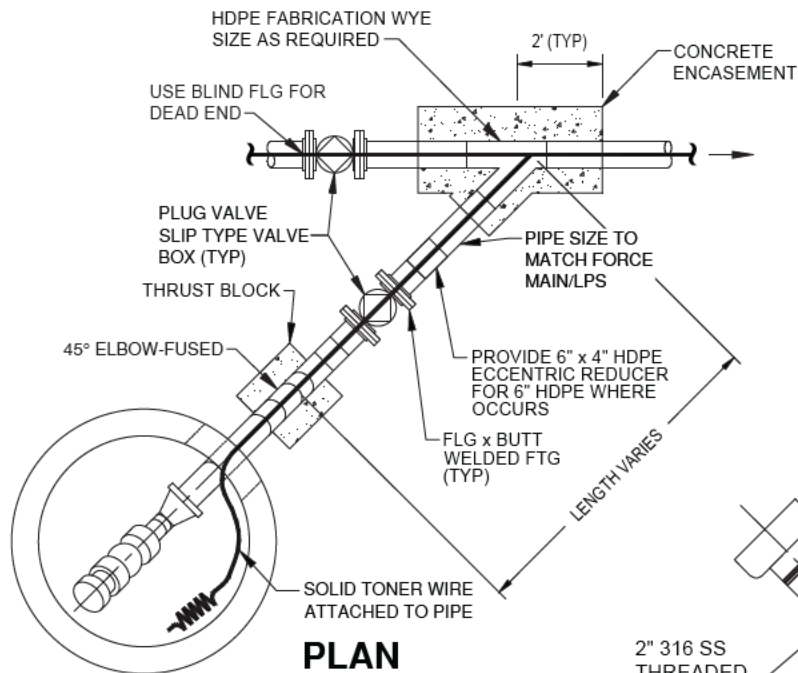
DWG. NUMBER

LPS-3
SHT 1 of 2

NO.	SIZE & DESCRIPTION	MATERIAL DESCRIPTION
1	RADIO	VCMWD SUPPLIED
2	1" CONDUIT WITH PULL ROPE	
3	CONTROL PANEL	
4	4" x 4" POST TREATED	OR EQUAL
5	GRINDER PUMP	E-ONE (SIZE DETERMINED BY DISTRICT)
6	1-1/2" PVC PIPE	ASTM D1785, SCH. 80
7	1-1/4" MIP x 1-1/2" SLIP REDUCER	ASTM D2464/D2467, SCH. 80
8	1-1/2" PVC 90° SLIP ELBOW	ASTM D2464, SCH. 80
9	3/4" ROCK	
10	2" FLOW METER	MCCROMETER
11	1-1/2" PVC FLANGE ADAPTER x SLIP	SCH. 80
12	1-1/2" TRUNION BALL VALVE SOC x SOC	SCH. 80
13	24" SEPTIC STACKABLE RISER	PVC, POLYLOK
14	24" SEPTIC STACKABLE RISER LID	PVC, POLYLOK
15	2" x 1-1/2" PVC REDUCER	SCH. 80
16	2" x 6" LONG, PVC PIPE	ASTM D1785, SCH. 80

**SEE SHEET 1 of 2
FOR LAYOUT
OF ITEMS**

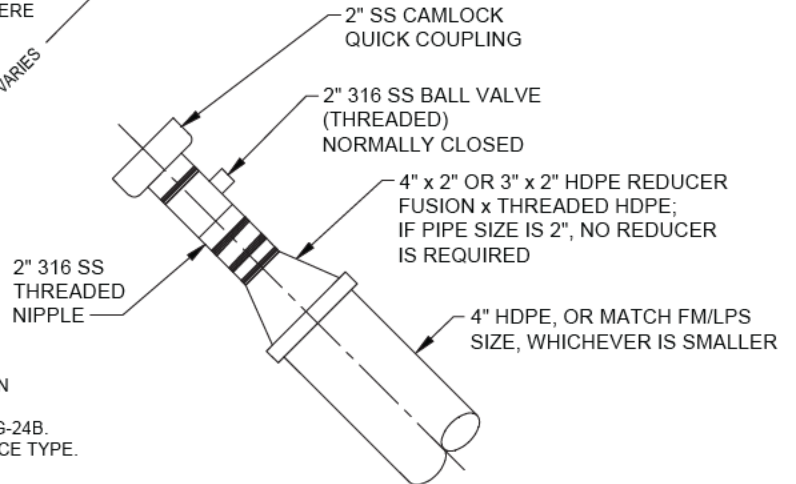
APPROVED:  District Engineer Date 3/2/2020 Latest Revision Date	 VALLEY CENTER MUNICIPAL WATER DISTRICT STANDARD DRAWING ON-SITE GRINDER PUMP COMMERCIAL	NOT TO SCALE DWG. NUMBER LPS-3 SHT 2 of 2
---	--	---



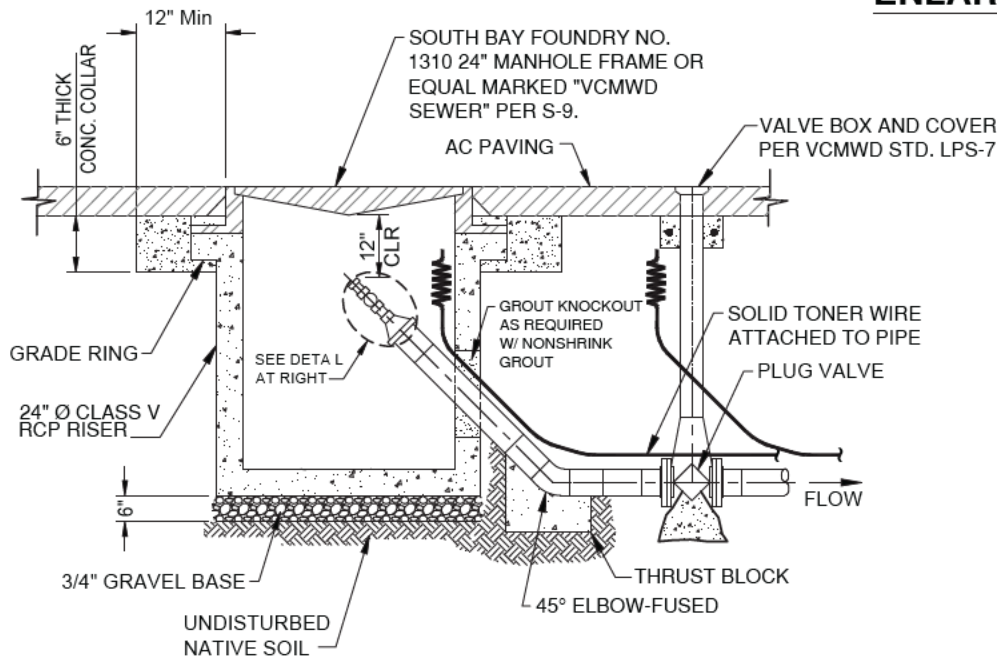
PLAN

NOTE:

1. HDPE PIPE 4-INCH AND LARGER, USE HDPE FLANGE ADAPTERS, WHERE FLANGE CONNECTIONS OCCUR.
2. HDPE PIPE 3-INCH AND SMALLER, USE HDPE THREADED UNIONS IN PLACE OF FLANGES.
3. TRENCH RESURFACING SHALL CONFORM TO SDRSD, G-24A AND G-24B. THE FINAL SURFACE TREATMENT SHALL MATCH EXISTING SURFACE TYPE.



ENLARGEMENT DETAIL



SECTION

APPROVED:

Wally G. Hall 3/2/2020

District Engineer Date

3/2/2020

Latest Revision Date



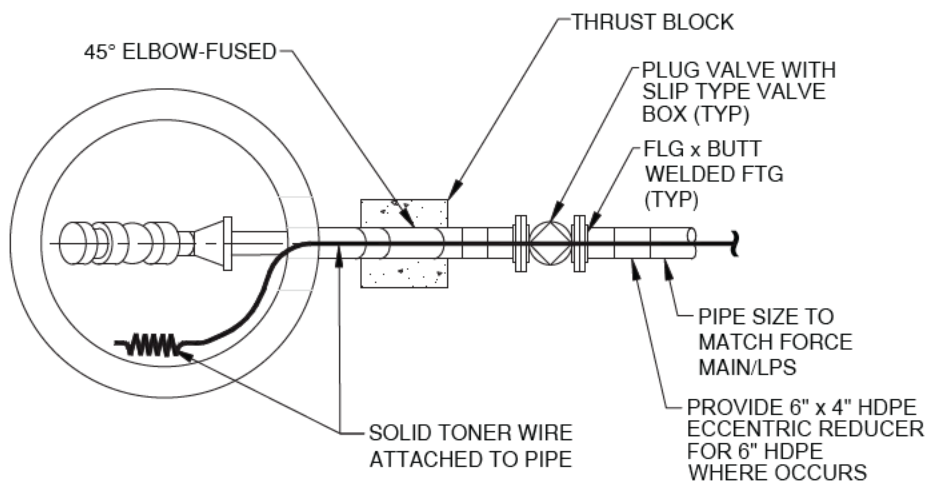
VALLEY CENTER MUNICIPAL WATER DISTRICT
STANDARD DRAWING

LOW PRESSURE CLEANOUT

NOT TO SCALE

DWG. NUMBER

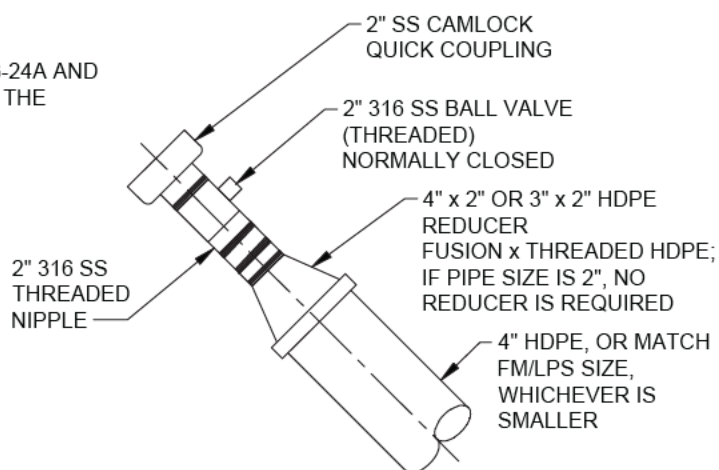
LPS-4



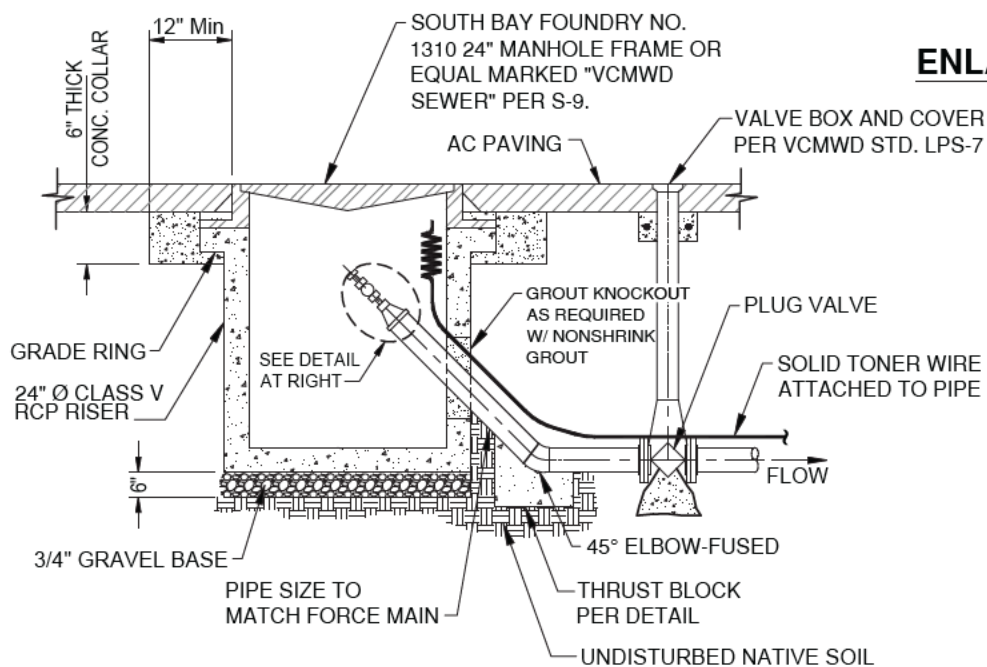
PLAN

NOTE:

1. TRENCH RESURFACING SHALL CONFORM TO SDRSD G-24A AND G24B. THE FINAL SURFACE TREATMENT SHALL MATCH THE EXISTING SURFACE TYPE.



ENLARGEMENT DETAIL



SECTION

APPROVED:

Wally G. Hall 3/2/2020

District Engineer

Date

3/2/2020

Latest Revision Date



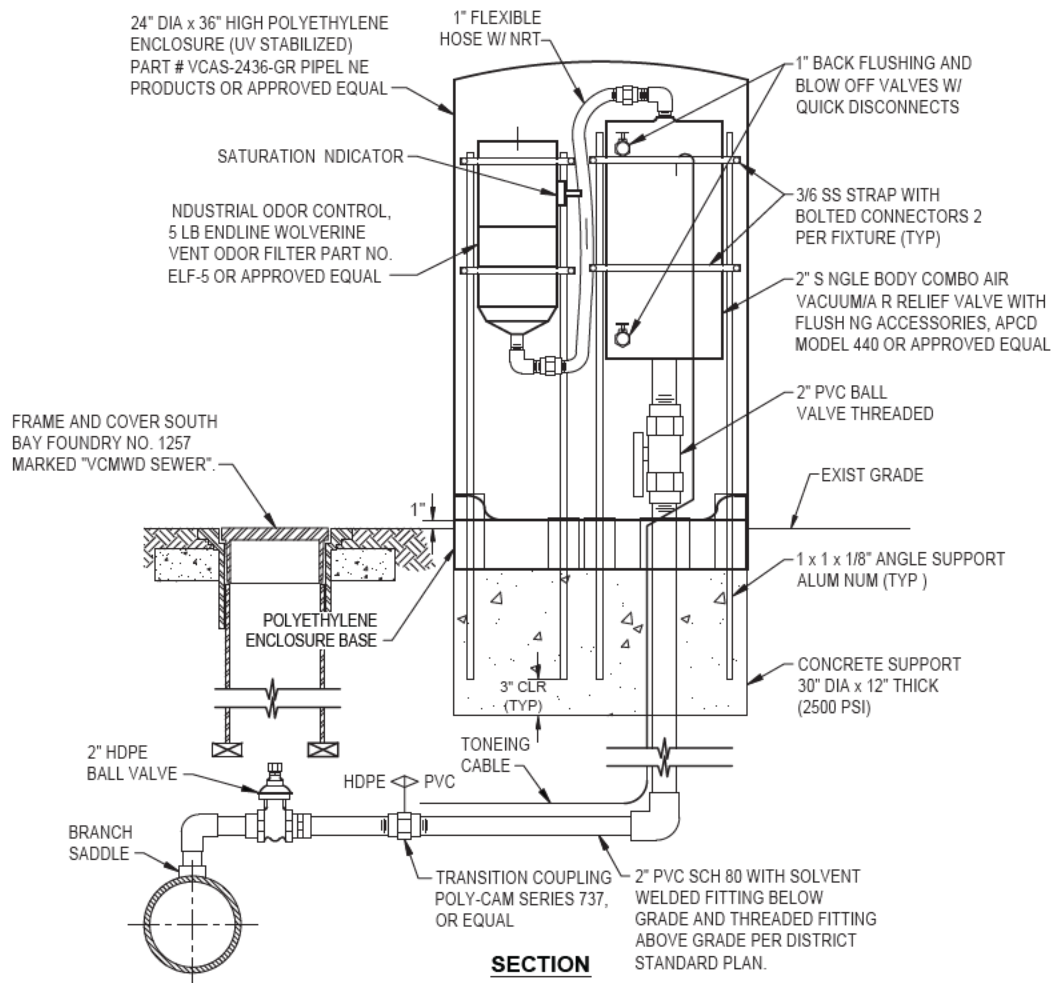
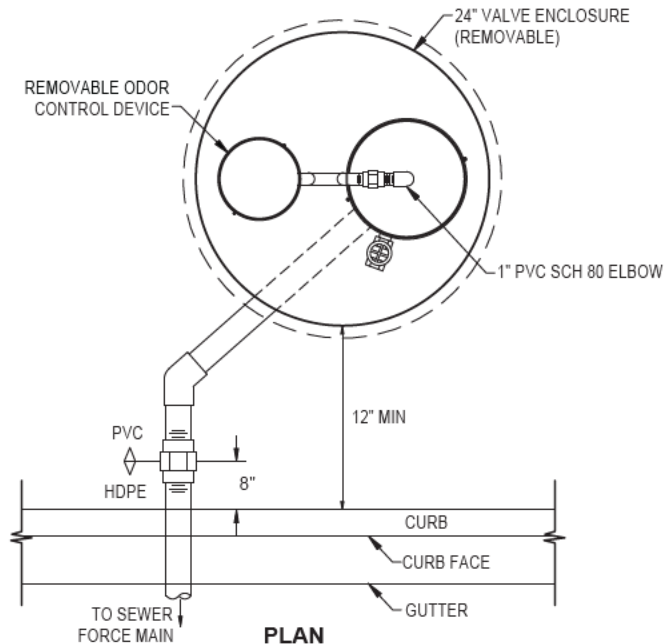
VALLEY CENTER MUNICIPAL WATER DISTRICT
STANDARD DRAWING

**LOW PRESSURE
TERMINUS CLEANOUT**

NOT TO SCALE

DWG. NUMBER

LPS-5



APPROVED:

Wally G. H. 3/2/2020

District Engineer

Date

3/2/2020

Latest Revision Date



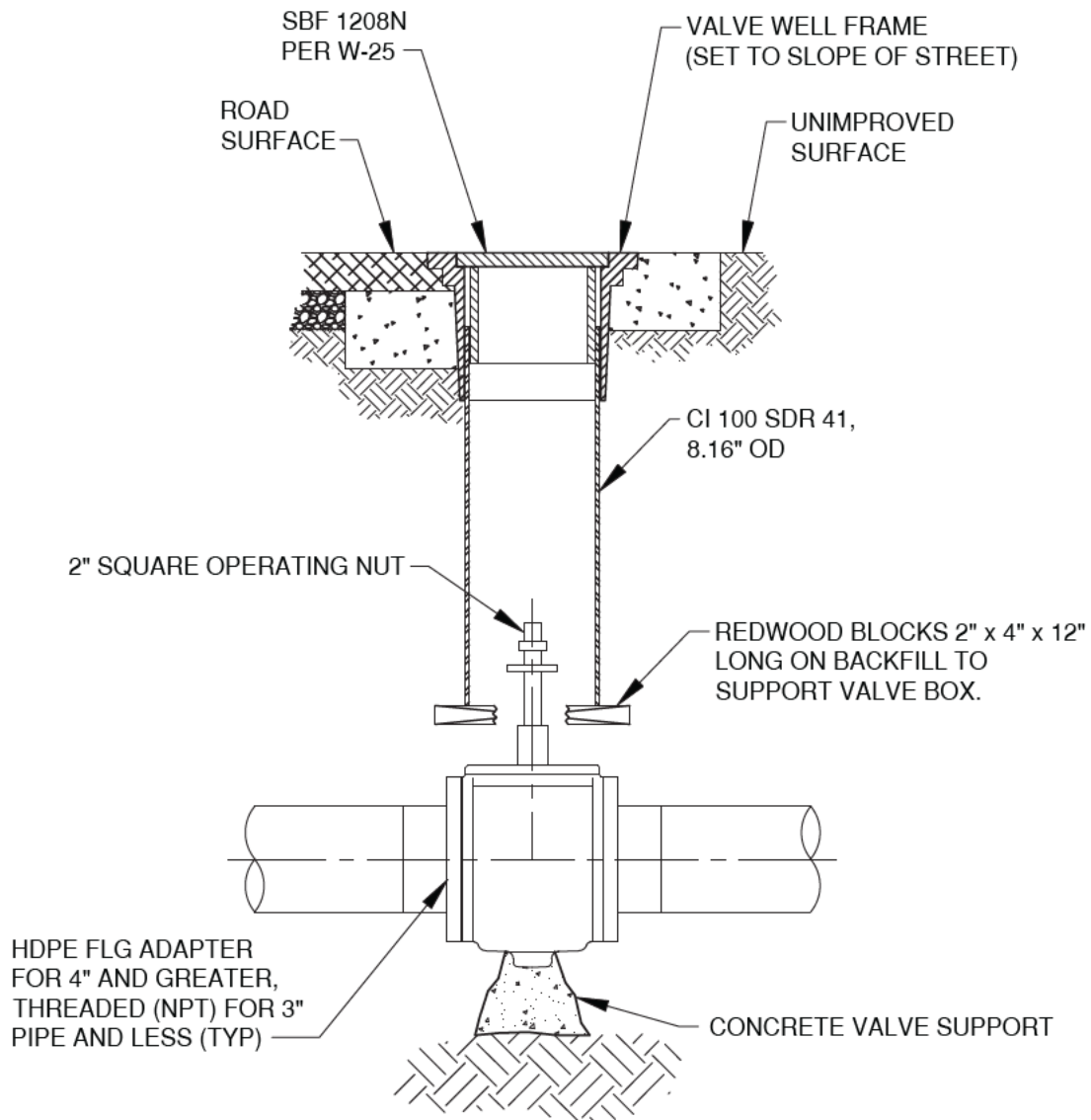
VALLEY CENTER MUNICIPAL WATER DISTRICT
STANDARD DRAWING

LOW PRESSURE COMBINATION AIR VALVE

NOT TO SCALE

DWG. NUMBER

LPS-6



APPROVED:

Wally G. H. 3/2/2020

District Engineer

Date

3/2/2020

Latest Revision Date



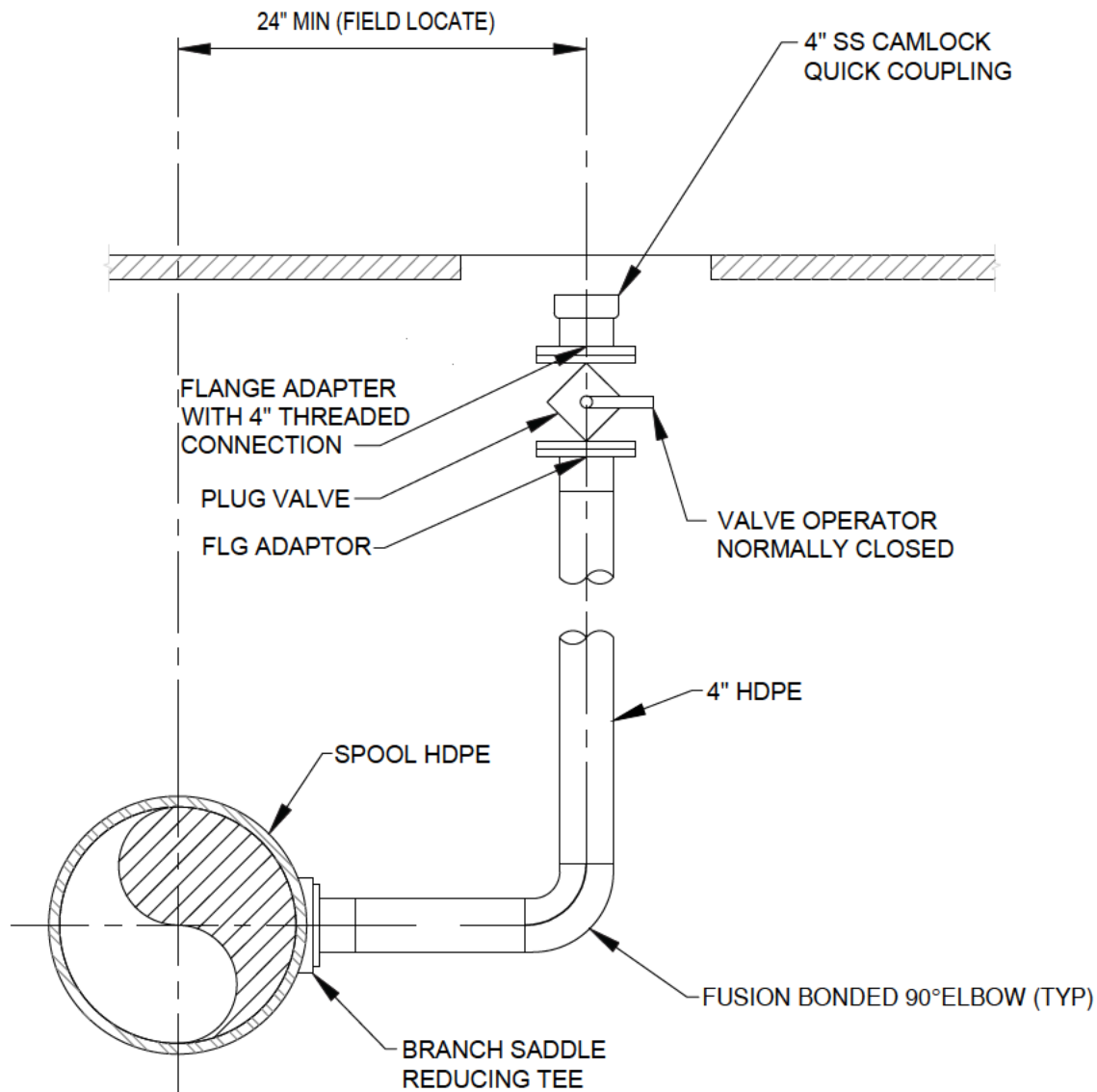
VALLEY CENTER MUNICIPAL WATER DISTRICT
STANDARD DRAWING

IN-LINE PLUG VALVE

NOT TO SCALE

DWG. NUMBER

LPS-7



NOTES:

1. IN ROADWAYS USE 17 x 30 TRAFFIC RATED BOX MARKED "SEWER". IN NON TRAVELED APPLICATIONS, USE CARSON 1730 METER BOX, GREEN IN COLOR, MARKED "SEWER".
2. SDRSD WV-02 SHALL TAKE PRECEDENCE FOR THE COVER IN THE PAVEMENT.
3. SIZE SHALL BE 4" OR MATCH FM/LPS, WHICH EVER IS SMALLER.
4. HDPE PIPE 4" AND LARGER, USE HDPE FLANGE ADAPTERS, WHERE FLANGE CONNECTIONS OCCUR. ALL FLANGE ADAPTERS SHALL BE STAINLESS STEEL.
5. HDPE PIPE 3" AND SMALLER, USE HDPE THREADED UNIONS IN PLACE OF FLANGES.

APPROVED:

Wally P. [Signature] 5/16/19

District Engineer

Date

5/16/2019

Latest Revision Date



VALLEY CENTER MUNICIPAL WATER DISTRICT
STANDARD DRAWING

LOW PRESSURE BLOWOFF

NOT TO SCALE

DWG. NUMBER

LPS-8